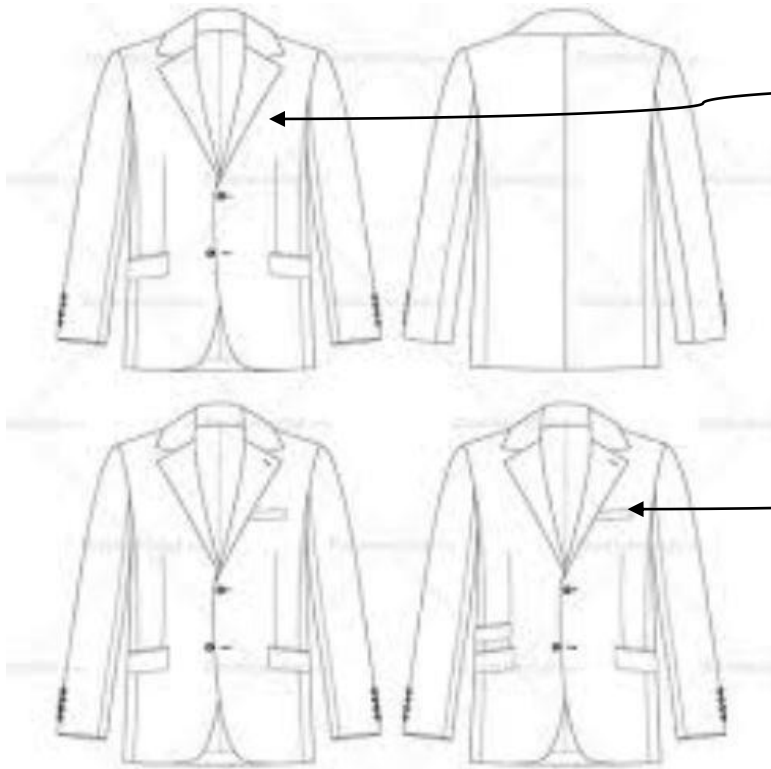


## UNIFORM SPECIFICATIONS - NTIMS DATA COLLECTION PROJECT

*NB: Service providers to send samples before bulk manufacturing*

Item(s) per participant	Colour (Refer to Annexure A)	Sample
1 x Jacket	Black	Refer to Section 1
2 X long sleeve shirts	Sisal (Pantone: 136C)	Refer to Section 2
2 x short sleeve shirts	White	Refer to Section 2
1x pair of formal shoes ( <b>Conducive for walking</b> )	Black	Refer to Section 3
1 x Tie ( <b>for Males</b> )	Sunset Orange ( Pantone: 021 C)	Refer to Section 4
1 x Chiffon ( <b>For Females</b> )	Sunset Orange ( Pantone: 021 C)	Refer to Section 5
2 x Trousers / Skirts ( <b>Skirts to be provided only to ladies who prefer skirts to trousers</b> )	1 Black and 1 Beige	Refer to Section 6
1 x Umbrella	Black	Refer to Section 7
1 x School Bag	Black	Refer to Section 8

## 1. BLAZER

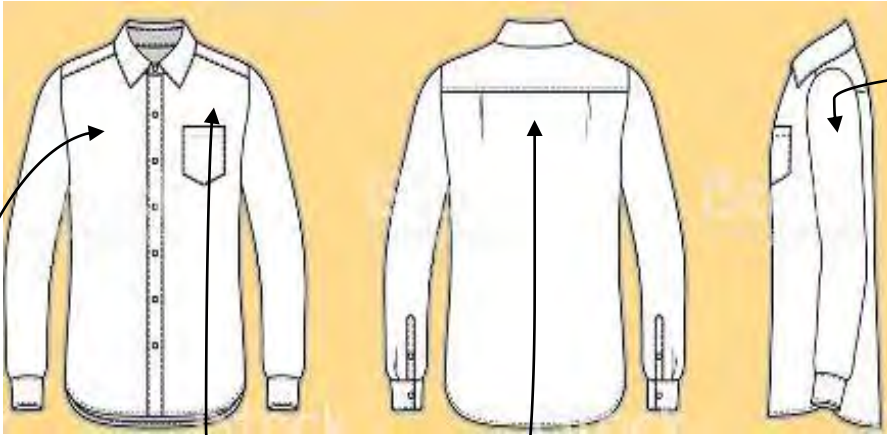


EPWP Logo will be embroidered on the right side of the jacket

Department of Tourism Logo will be embroidered on the left side of the blazer



## 2. LONG/SHORT SLEEVE SHIRT



Programme logo  
will embroidered on  
the left sleeve of  
the shirt

Project Name will be embroidered on the back of the shirt



EPWP Logo will be embroidered on the right side of the shirt



Department of Tourism Logo will be embroidered on the left  
side of the shirt

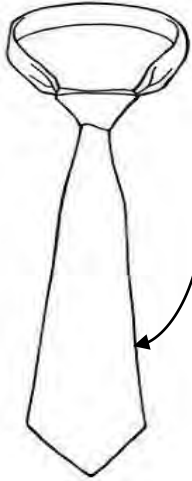
### 3. Shoes for Men (NB: Rubber Sole)



### shoes for Females



#### 4. TIE (For Males)

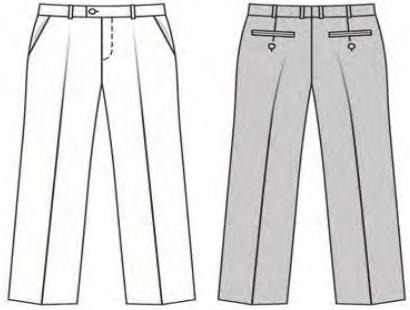


Department of Tourism Logo will be embroidered on the tie

## 5. CHIFFON (For Females)



## 6. TROUSERS FOR MALES AND FEMALES

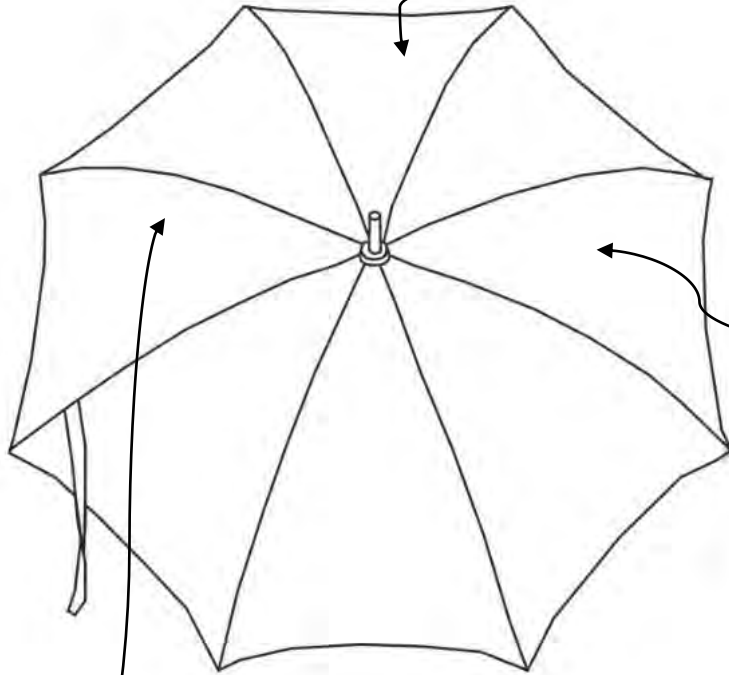


## 6. SKIRTS FOR FEMALES



## 7. UMBRELLA

Programme logo will  
embroidered on the  
Umbrella



Department of Tourism Logo will be embroidered on the  
umbrella



EPWP Logo will be embroidered on the umbrella



## 8. SCHOOL BAG



Programme logo will  
embroidered on the Bag



Department of Tourism Logo will be embroidered on the  
umbrella

